

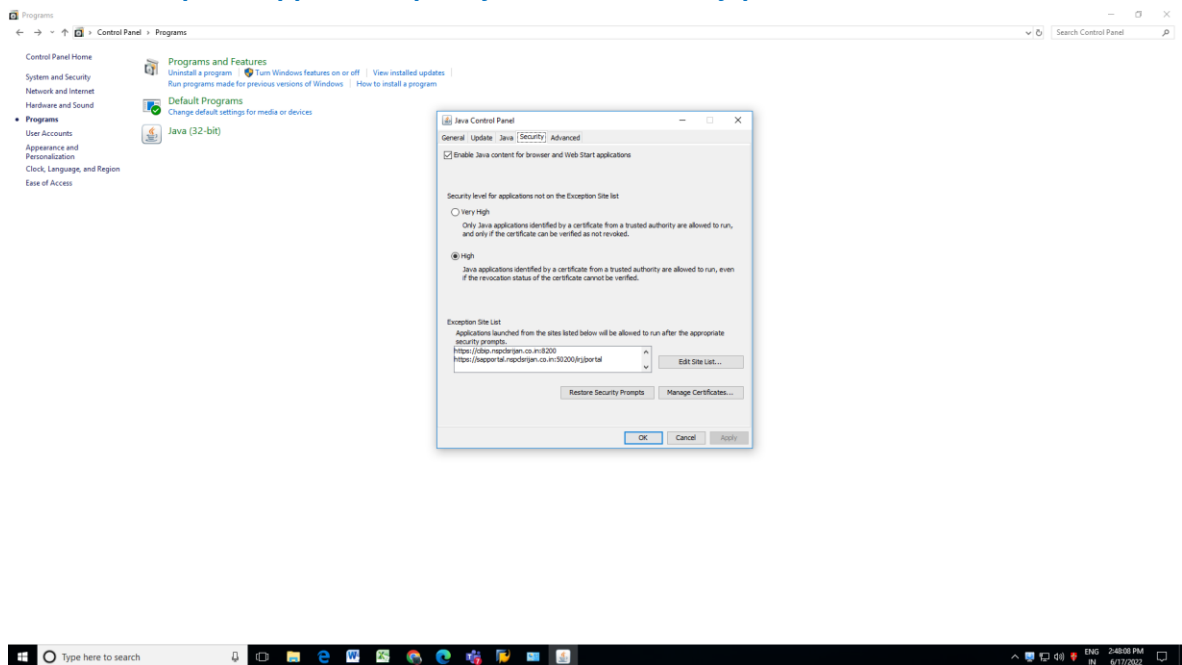
DSC Authentication Process SRM through Chrome-IEtab

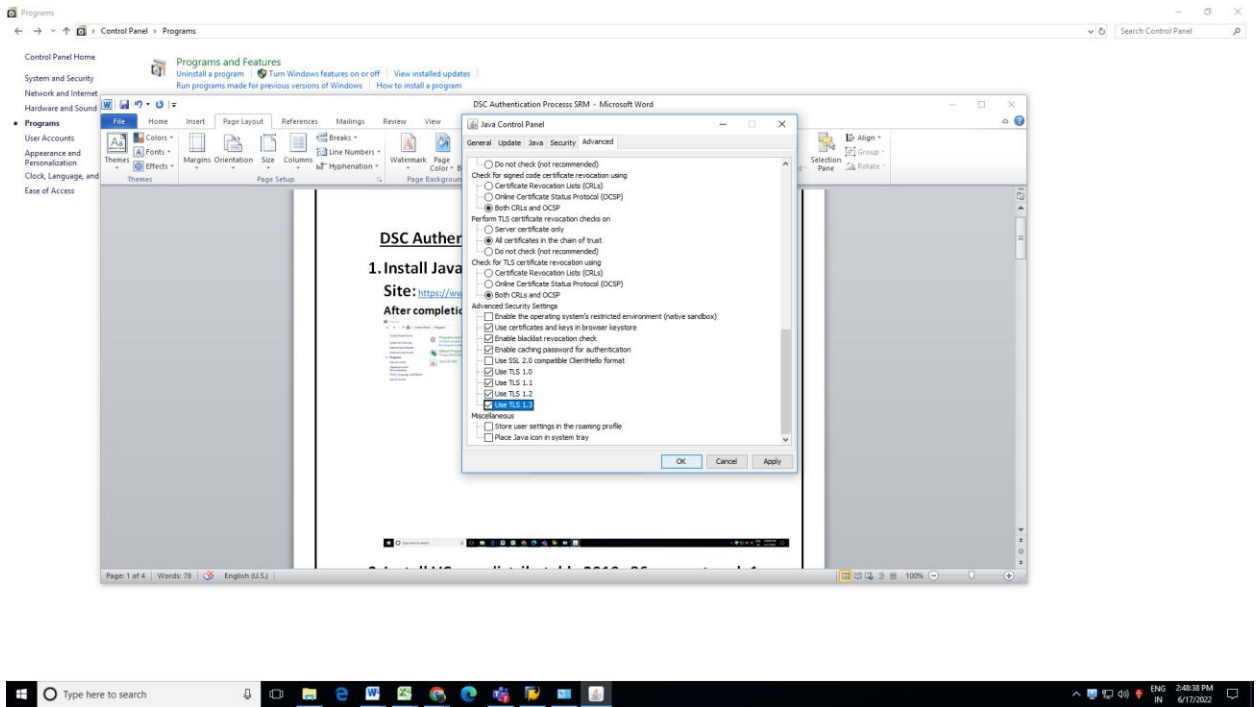
1. Install Java 8 – 32 Bit

Site: https://www.java.com/download/ie_manual.jsp

After completion of download open Java-32 bit in control panel.

Include <https://sapportal.nspclsrijan.co.in:50200/irj/portal>

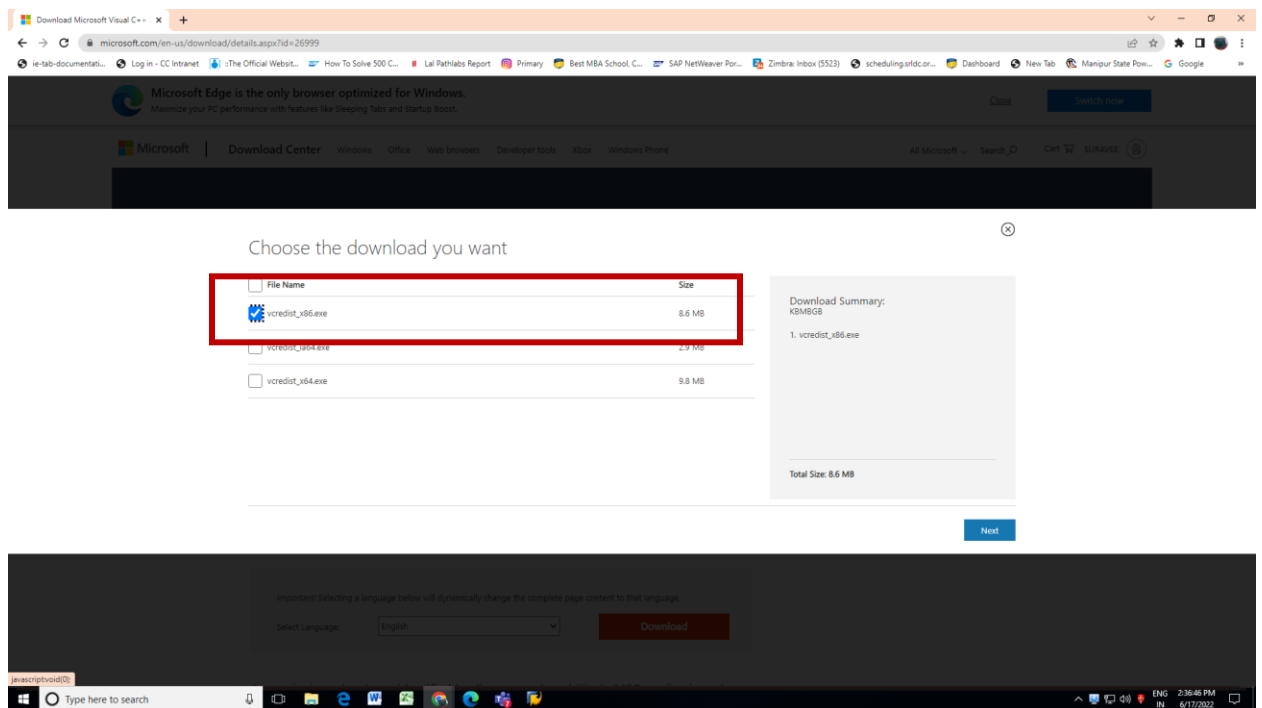




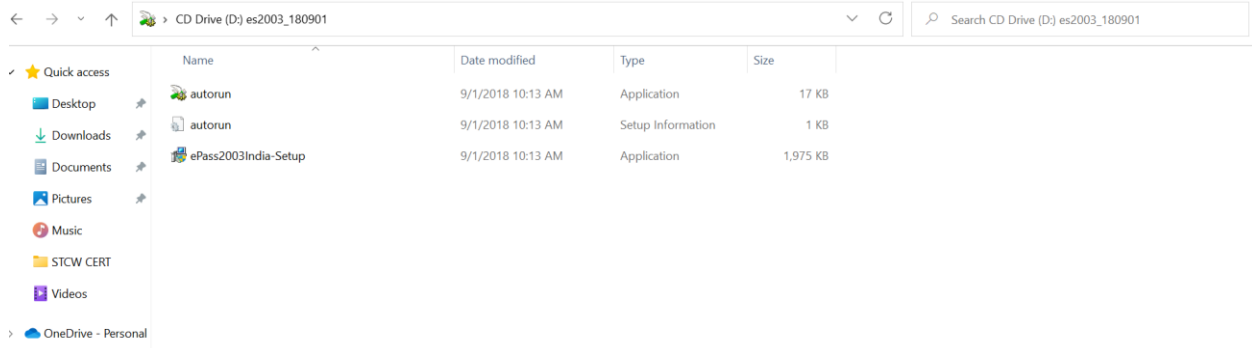
2. Install VC++ redistributable 2010 x86 support pack

1

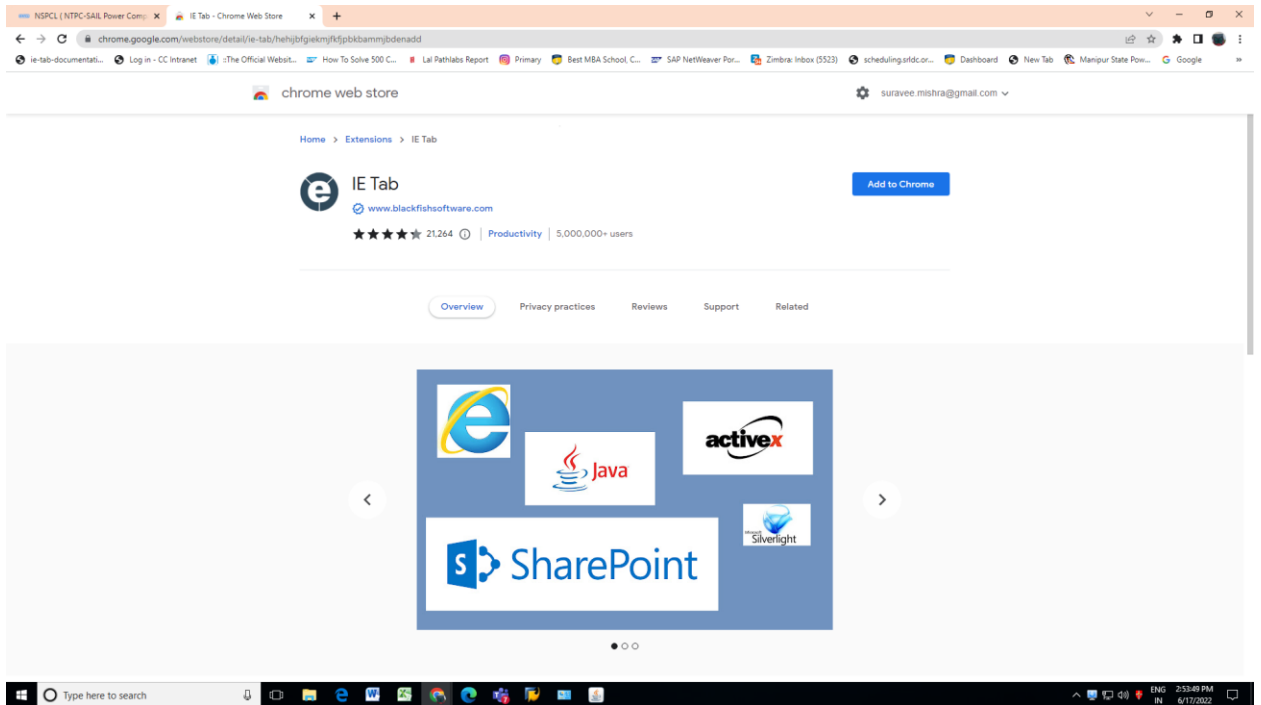
Site: <https://www.microsoft.com/en-us/download/details.aspx?id=26999>

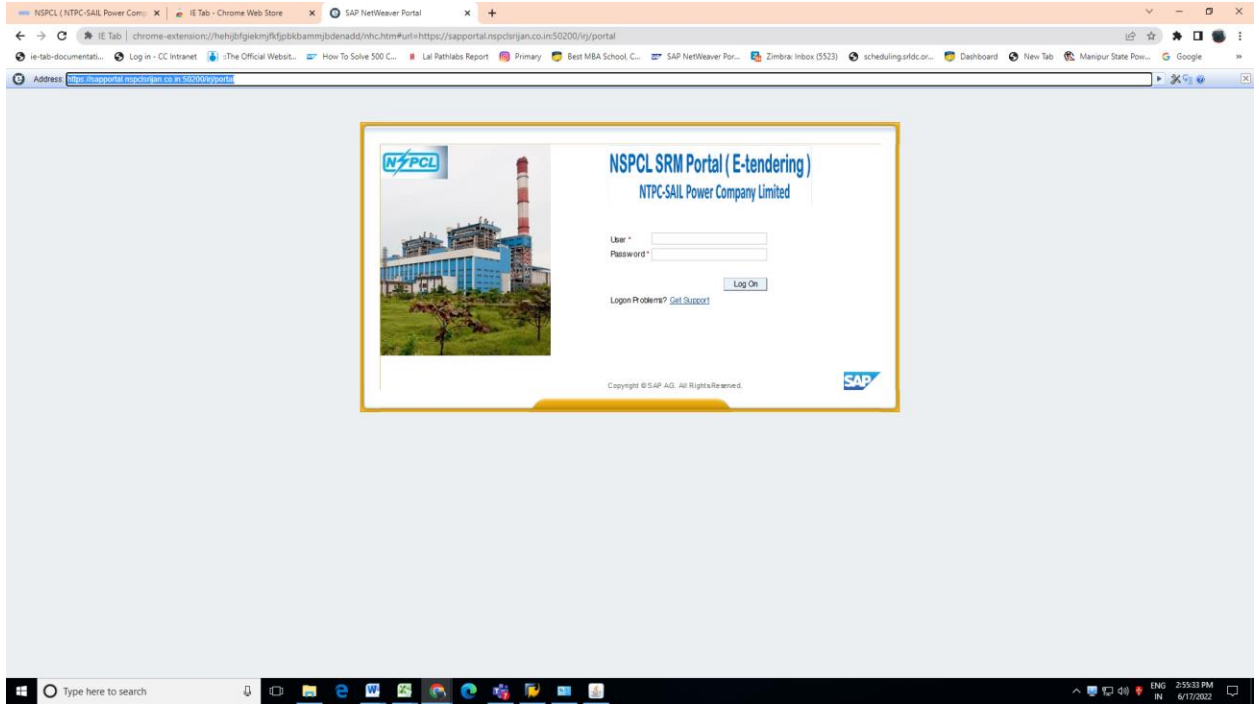


3. Install DSC



4. Chrome – IE tab Search for IE tab for chrome





This procedure is applicable for all Windows OS.

Now your system is ready to accept DSC on SRM.

